

Enabling positive change in social work

Matthew Devlin

Regional Engagement Lead (North West)

Matthew.Devlin@socialworkengland.org.uk

**Social
Work
England**





Our purpose

Social work is about people.

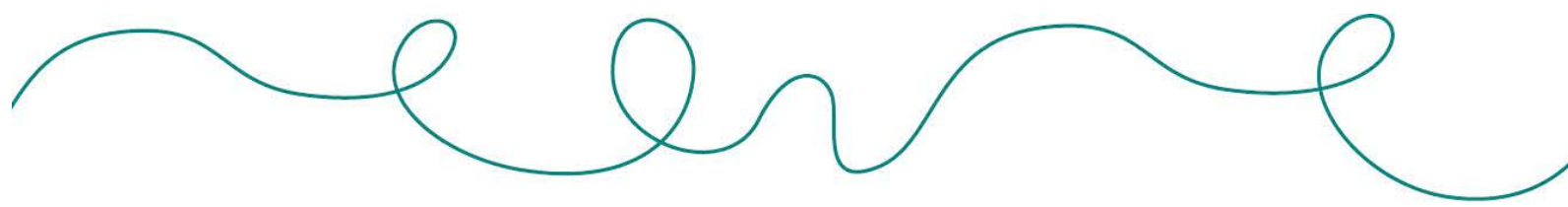
Our purpose is to regulate social workers in England so that people receive the best possible support whenever they might need it in life.

We are committed to raising standards through collaboration with everyone involved in social work.

Regional Engagement Team

- **Engage, collaborate and coproduce with:**
 - Social workers
 - People with lived experience
 - Social work educators and trainers
 - Social work students
 - Partner organisations
 - Social work employers
- ...to **raise the standards** of social work, and **raise the profile** of the profession
- ...by supporting stakeholders to **embed** our professional **standards** and standards of education and training and to **identify emerging trends, themes and issues** and **gather information and intelligence** to inform our approach to regulation

Social Work England Regional Map



Region

- Midlands
- Eastern
- Yorkshire and Humber
- North West
- North East
- London
- South West
- South East

Counties

- Nottinghamshire, Derbyshire, Northamptonshire, Leicestershire, Staffordshire, Worcestershire, Birmingham, Warwickshire, Shropshire, Herefordshire, Rutland
- Norfolk, Suffolk, Essex, Cambridgeshire, Lincolnshire, Hertfordshire, Bedfordshire
- South Yorkshire, West Yorkshire, North Yorkshire, East Riding of Yorkshire, Humberside
- Cumbria, Lancashire, Greater Manchester, Cheshire, Merseyside
- County Durham, Northumberland, Tyne and Wear
- City of London, Greater London (incl. Middlesex)
- Gloucestershire, Wiltshire, Dorset, Somerset, Devon, Cornwall, Bristol, Isles of Scilly
- Kent, East Sussex, West Sussex, Surrey, Hampshire, Berkshire, Oxfordshire, Buckinghamshire, Isle of Wight

We.....

- Set professional standards for social workers in England, including continuous professional development standards.
- Will hold the register for circa 96,000 social workers.
- Set initial education and training standards and approve qualifying courses.
- Evaluate social workers' continuing professional development.
- Approve post qualifying courses for persons who are, or wish to become, approved to act as approved mental health professionals and courses for persons who are, or wish to become, approved to act as best interest assessors.
- Handle concerns raised to us about a social worker and assess whether a social worker's practice has fallen short of the professional standards.

Professional standards

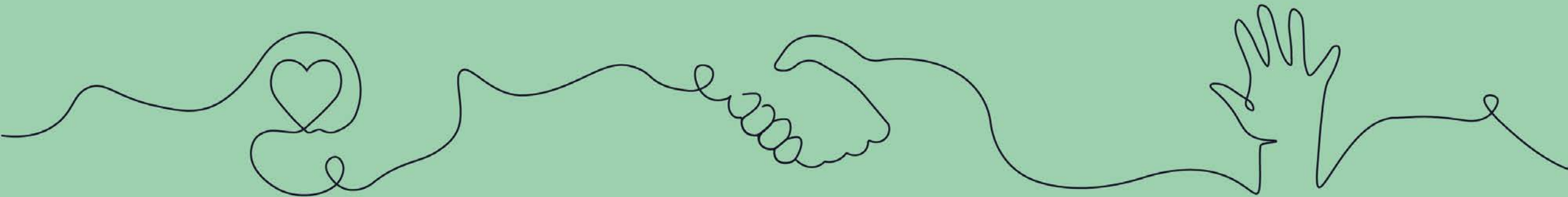
- Our [professional standards](#) have been developed in collaboration with a range of people, including people with lived experience of social work.
- They are a series of statements of commitment that social workers must make to ensure their practice meets our standards.
- They confirm how social workers will act.
- Committing to these professional standards will help underpin our objective to increase consistency in social work practice.
- There is a relationship between our standards, the Professional Capabilities Framework (PCF) and the Knowledge and Skills Statements (KSS) for adults and child and family social workers that will evolve.

Professional standards

① _____
Promote the rights, strengths and wellbeing of people, families and communities.

② _____
Establish and maintain the trust and confidence of people.

③ _____
Be accountable for the quality of my practice and the decisions I make.



④ _____
Maintain my continuing professional development.

⑤ _____
Act safely, respectfully and with professional integrity.

⑥ _____
Promote ethical practice and report concerns.

Education and training standards

- We recognise that course providers need time to adapt to any new regulatory requirements.
- Therefore, our first set of [education and training standards](#) will mirror HCPC with only minor changes. These will come into force in December 2019 when we become the regulator.
- Towards the end of next year, the 2020 training and education standards will come into force. These have been developed with education and training providers to ensure they are relevant and will mean that people qualify ready to become social workers.
- As part of the transition arrangements with HCPC, we are already accepting requests for approval of new qualifying social work courses. We can't undertake inspections or make decisions yet, but we are working with course providers, so they understand our processes and we start to gather required evidence.

Education and training standards 2020

1

Admissions

Admissions processes must be robust, transparent, ensure that applicants meet course entry requirements and involve a range of stakeholders.

2

Learning environment

The learning environment must provide education and training opportunities that enable students to develop their skills and knowledge across all areas of social work, gain required experience in practice settings and meet the professional standards in supportive, supervised and safe settings.

3

Course governance, management and quality

Social work courses must be governed, resourced and managed using effective and transparent processes in collaboration with employers and people with lived experience of social work. There must be processes to monitor and manage the quality and delivery of courses.

4

Curriculum and assessment

Courses must be designed to enable students to develop the required behaviours, skills, knowledge and understanding to meet the professional standards.

5

Supporting students

Students must receive appropriate educational and pastoral support.

6

Level of qualification for entry onto the register

The threshold entry is a bachelor's degree with honours.



Continuing professional development (CPD)

- Social workers are required to undertake CPD to maintain their registration under standard 4 of the [professional standards](#). This outlines the areas of CPD social workers should consider.
- We will use our first year of regulation to gain insight into how social workers are learning in the workplace and how employers are supporting them. We will embed our new CPD standards and procedures and publish a report of our evaluation.
- We will ask social workers to carry out CPD as they do now, to uphold the professional standards.
- All CPD must be recorded in a Social Work England online account.

Regional engagement contacts

- North West – Matthew Devlin - Matthew.Devlin@socialworkengland.org.uk
- North East – Catherine Witt - Catherine.Witt@socialworkengland.org.uk
- Yorkshire and Humber – Ahmina Akhtar - Ahmina.Akhtar@socialworkengland.org.uk
- Midlands – Jess McEwen - Jess.McEwen@socialworkengland.org.uk
- South West – Phillippa Geddes - Philippa.Geddes@socialworkengland.org.uk
- South East – Kate Metcalf - Kate.Metcalf@socialworkengland.org.uk
- East – Vacant - enquiries@socialworkengland.org.uk
- London – Vacant - enquiries@socialworkengland.org.uk